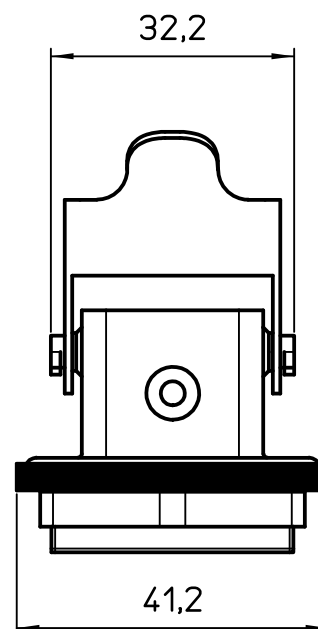
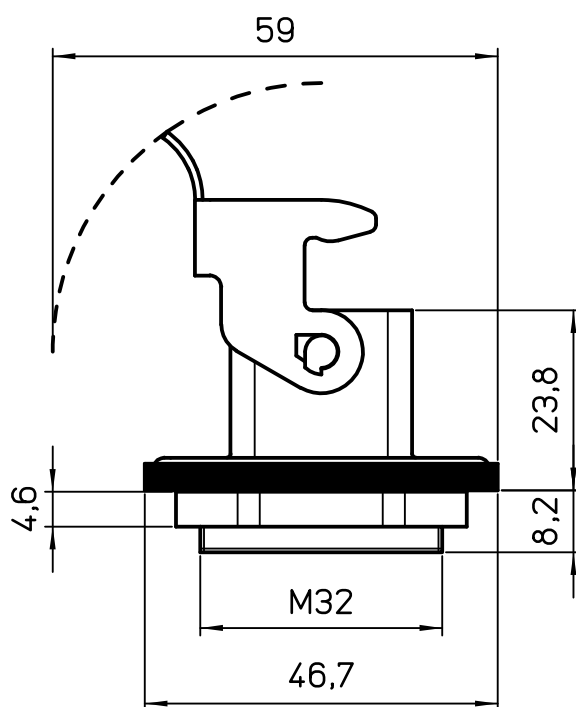
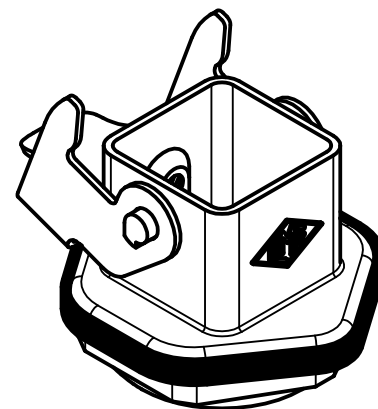
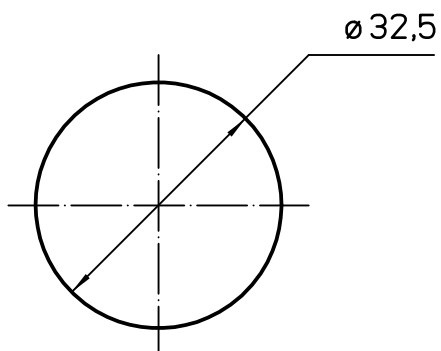


Panel cut-out for enclosures



SW Counternut=35mm

Diritti riservati All rights reserved

REV.	DATE	SIGNATURE



Dimensions  
in mm

Simplified representation with dimensions without tolerance

Original Size A4

Date 11/03/21

Sign. S. Diasparra

MKA IFC

Bulkhead mounting housing, galvanized steel rigid lever and gasket, M32, with counternut

Scale

1:1

